

JSI // ALLIANCE



FLEET LIST

WWW.JSI-ALLIANCE.COM

Heavy Lift & Semi-Sub Fleet

K3000

3,000 t SWL

Ice class 1A

HLV Jumbo Kinetic 2014
HLV Fairmaster 2015



Deadweight	14,000 t
Cranes	2×1,500 t cranes (combinable up to 3,000 t)
Max hold dimensions	108.60×17.00×12.60 m
Hold capacity	21,000 m ³
Free deckspace dim.	120.40×27 m
Free deckspace	3,250 m ²
LOA/Beam	152.60 m / 27.40 m
Speed	16.3 knots
Ice Class	1A Finnish Swedish

Type 183

2,000 t SWL

DP2 / SPS IP

HLV Lone 2011

DP1

HLV Svenja 2010



Deadweight	12,501 t
Cranes	2×1,000 t (combinable up to 2,000 t)
Max hold dimensions	107.10×17.00×13.50 m
Hold capacity	DP1: 18,470 m ³ DP2: 17,735 m ³ (with tweendeck)
Free deckspace dim.	128.50×27.50 m
Free deckspace	DP1: 3,372 m ² DP2: 3,215 m ²
LOA/Beam	160.60 m / 27.91 m
Speed	20 knots

J1800

1,800 t SWL

HLV Jumbo Jubilee 2012
HLV Fairpartner 2012

DP2 / Helipad

HLV Jumbo Javelin 2012
HLV Fairplayer 2012



Deadweight	13,017 t
Cranes	2×900 t cranes (combinable up to 1,800 t)
Max hold dimensions	101.95×17.00×12.50 m
Hold capacity	19,200 m ³
Free deckspace dim.	117×26.50 m
Free deckspace	3,100 m ²
LOA/Beam	144.10 m / 26.70 m
Speed	17.0 knots
Helideck	Sikorsky S-92

Orca

1,600 t SWL

Ice class 1A

HLV Elise
HLV Frida
HLV Patricia
HLV Carlotta
HLV Vera



Deadweight	14,600 t
Cranes	2×800 t (combinable up to 1,600 t)
Max hold dimensions	107 × 18.5 × 13.3 m
Hold capacity	23,600 m ³
Free deckspace	3,330 m ²
LOA/Beam	149.90 m / 27.65 m
Speed	19 knots
Fuel readiness	Methanol (acc. future ISO/AWI 6583) after installation of pre-approved Methanol Module

Type 176

1,400 t SWL

HLV Regine 2009
HLV Trina 2008
HLV Anne-Sofie 2008
HLV Frauke 2008



Deadweight	12,000 t
Cranes	2×700 t (combinable up to 1,400 t) + 1×350 t
Max hold dimensions	107.10×17.00×13.10 m
Hold capacity	19,299 m ³
Free deckspace dim.	128.00×24.00 m
Free deckspace	2,918 m ²
LOA/Beam	159.80 m / 24.34 m
Speed	20 knots

Type 116

900 t SWL

Ice class 1A

HLV Calypso 2011
HLV Amoenitas 2010
HLV Imke 2010
HLV Anna 2010
HLV Hilke 2010
HLV Caroline 2009



Deadweight	10,000 t
Cranes	2×450 t (combinable up to 900 t)
Max hold dimensions	94.25×16.20×12.08 m
Hold capacity	15,700 m ³
Free deckspace dim.	108.00×23.00 m
Free deckspace	2,311 m ²
LOA/Beam	133.00 m / 23.00 m
Speed	16 knots
Ice Class	DNV GL E3 equivalent to Finnish/Swedish 1A
Lakes Fitted	

Type 171

800 t SWL

Ice class 1A

HLV Klara 2012



Deadweight	19,100 t up to 13,700 t DWCCC
Cranes	2×400 t (combinable up to 800 t) + 1×120 t
Max hold dimensions	Hold 1: 86.10×18.00×13.67 m Hold 2: 25.20×13.10×13.32 m
Hold capacity	23,720 m ³
Free deckspace dim.	113.30×18.00 m
Free deckspace	1,992 m ²
LOA/Beam	166.15 m / 22.90 m
Speed	17 knots
Ice Class	DNV GL E3 equivalent to Finnish / Swedish 1A

H800

800 t SWL

HLV Jumbo Vision 2012
HLV Fairlane 2012



Deadweight	7,051 t
Cranes	2×400 t cranes (combinable up to 800 t)
Max hold dimensions	72.75×15.18×11.36 m
Hold capacity	9,500 m ³
Free deckspace dim.	73.20×20.50 m
Free deckspace	1,500 m ²
LOA/Beam	110.49 m / 20.85 m
Total height	11.36 m
Speed	15.5 knots
Lakes Fitted	

Type 161B

700 t SWL

HLV Maria 2004
HLV Annette 2003



Deadweight	8,900 t
Cranes	2×350 t (combinable up to 700 t) + 1×250 t
Max hold dimensions	82.90×15.80×10.95 m
Hold capacity	13,604 m ³
Free deckspace dim.	124.00×20.50 m
Free deckspace	2,363 m ²
LOA/Beam	151.67 m / 21.02 m
Speed	20 knots

Type 161A

640 t SWL

HLV Wiebke 2000
HLV Paula 2000
HLV Annegret 2000
HLV Grietje 2000



Deadweight	9,370 t
Cranes	2×320 t (combinable up to 640 t) + 1×200 t
Max hold dimensions	82.90×15.80×10.97 m
Hold capacity	13,604 m ³
Free deckspace dim.	124.00×20.50 m
Free deckspace	2,329 m ²
LOA/Beam	151.67 m/21.02 m
Speed	20 knots

Type 161

550 t SWL

HLV Annemieke 1998



Deadweight	9,544 t
Cranes	2×275 t (combinable up to 550 t) + 1×150 t
Max hold dimensions	82.90 x 15.80 x 11.17 m
Hold capacity	13,614 m ³
Free deckspace dim.	124.00×20.50 m
Free deckspace	2,329 m ²
LOA/Beam	151.67 m/20.65 m
Speed	20 knots

Semi-Sub/ Deck Carrier

DP2

MV Zhong Ren 121 2022
MV Zhong Ren 122 2022



Deadweight	26,200 t
Max hold dimensions	82.90 x 15.80 x 11.17 m
Free deckspace dim.	133.00 × 39.8 m
Free deckspace	5,300 m ²
Uniform deck load	25 t/m ²
LOA	169 m
Design draught	7.5 m
Max. submerg. draught	21.4 m
Max. water height above deck (subm.)	10.5 m
Speed	14 knots

FLY JIB J1800

Up to
700 t SWL

16 m / 7 m



Length	FLY JIB 17 m and FLY JIB 7 m
Lifting capacity	
FLY JIB 17 m	Max 700 t @maxRadius of 25.00 m Max 228 t @Radius up to 51.70 m Max lifting height above deck: 52.00 m
FLY JIB 7 m	Max 900 t @maxRadius of 26.10 m Max 378 t @Radius up to 41.80 m Max lifting height above deck: 43.40 m
Other	<ul style="list-style-type: none"> • Dismountable • Can be installed on each of the cranes • Interchangeable between J-class vessels

FLY JIB Type 183

Up to
700 t SWL

23 m



Length	FLY JIB 23 m, in short configuration 13 m
Lifting capacity	
Long configuration	Max 500 t @Radius up to 23.00 m Max 214 t @Radius up to 55 m
Short configuration	Max 625 t @Radius up to 15 m Max 315 t @Radius up to 45 m Max lifting height above deck: 60.70 m
Other	<ul style="list-style-type: none"> • Dismountable • Can be installed on each of the cranes • Interchangeable between 183 class vessels • Configurable to two lengths

12K-500

Box MPP TWD

MPV Servant 2018
MPV Ind. Skipper 2016
MPV Ind. Song 2016
MPV Ind. Swift 2016



Deadweight	12,300 t
Cranes	2×250 t (combinable up to 500 t)
Max hold dimensions	76.50 m×17.60 m×11.70 m
Cargo capacity	17,600 m ³ / 621,538 cbft Bale
Free deckspace	up to 2,160 m ³
Holds/Hatches	2 / 2
LOA/Beam	147.00 m / 22.80 m
Speed	abt. 15 knots
IMO fitted	Yes

12K-360

Box MPP TWD

MPV RMS Fraternity 2008



Deadweight	12,672 t
Cranes	2×180 t cranes (combinable up to 360 t)
Max hold dimensions	42.33 m×17.50 m×11.20 m
Cargo capacity	15,953 m ³ / 563,374 cbft Bale
Free deckspace	1,480 m ³
Holds/Hatches	3 / 3
LOA/Beam	138.07 m / 21.00 m
Speed	abt. 14 knots
IMO fitted	Yes

12K-300

Box MPP TWD

MPV Louise Auerbach 2007
MPV Ind. Katharina 2009
MPV Ind. Ursula 2008
MPV Eva 2008
MPV Ella 2007

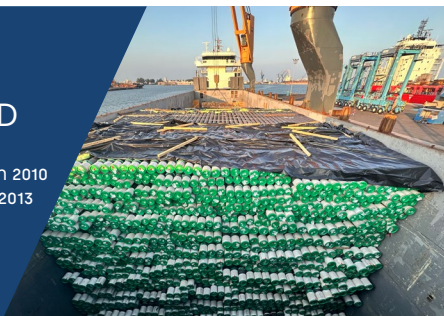


Deadweight	12,840 t
Cranes	2×150 t (combinable up to 300 t)
Max hold dimensions	42.00 m×17.50 m×11.18 m
Cargo capacity	14,891 m ³ / 525,870 cbft Bale
Free deckspace	1,486 m ³
Holds/Hatches	3 / 3
LOA/Beam	138.07 m / 21.00 m
Speed	abt. 13 knots
IMO fitted	Yes

10K-160

Box MPP TWD

MPV Ind. Momentum 2010
MPV Ind. Merchant 2013



Deadweight	10,029 t
Cranes	2×80 t (combinable up to 160 t)
Max hold dimensions	70.50 m×17.20 m×11.79 m
Cargo capacity	12,358 m ³ / 436,000 cbft Grain
Free deckspace	1,200 m ³
Holds/Hatches	1 / 1
LOA/Beam	116.26 m / 17.80 m
Speed	abt. 14 knots
IMO fitted	Yes

8K-400

Box MPP TWD

MPV Ind. Challenger 2000
MPV Ind. Charger 2000



Deadweight	8,034 t
Cranes	2×200 t (combinable up to 400 t)
Max hold dimensions	72.25 m×16.25 m×5.36 m
Cargo capacity	10,532 m ³ / 371,934 cbft Bale
Free deckspace	1,133 m ³
Holds/Hatches	3 / 1
LOA/Beam	119.80 m / 20.00 m
Speed	abt. 16 knots
IMO fitted	Yes

8K-300

MPP TWD

MPV Ind. Color 2019
MPV Ind. Confidence 2018
MPV Ind. Constant 2018
MPV Ind. Courage 2018



Deadweight	8,500 t
Cranes	2×150 t (combinable up to 300 t)
Max hold dimensions	60.90 m×15.30 m×12.10 m
Cargo capacity	10,228 m ³ / 361,198 cbft Bale
Free deckspace	927.59 m ³
Holds/Hatches	1 / 1
LOA/Beam	99.99 m / 20.50 m
Speed	abt. 13.5 knots
IMO fitted	Yes

8K-240

Box MPP TWD

MPV Emma 2009



Deadweight	7,700 t
Cranes	2×120 t (combinable up to 240 t)
Max hold dimensions	65.10 m×13.50 m×9.50 m
Cargo capacity	9,220 m ³ / 325,601 cbft Bale
Free deckspace	1,066 m ³
Holds/Hatches	2 / 2
LOA/Beam	122.45 m / 18.20 m
Speed	abt. 15 knots
IMO fitted	Yes

8K-120

MPP TWD

MPV Ind. Hobart 2006



Deadweight	7,778 t
Cranes	2×60 t (combinable up to 120 t)
Max hold dimensions	54.00 m×12.65 m×9.45 m
Cargo capacity	9,414 m ³ / 332,452 cbft Bale
Free deckspace	1,024 m ³
Holds/Hatches	2 / 2
LOA/Beam	118.55 m / 15.20 m
Speed	abt. 14.7 knots
IMO fitted	No

6K-120/160

MPP TWD

MPV Ind. Ace 1999
MPV Ind. Ama 1998
MPV Ind. Aim 1999



Deadweight	6,288 t
Cranes	2×60 t (combinable up to 120 t) Ind. Ace / Ind. Ama 2×80 t (combinable up to 160 t) Ind. Aim
Max hold dimensions	58.10 m×14.00 m×9.00 m
Cargo capacity	6,622 m ³ / 233,853 cbft Bale
Free deckspace	1,076 m ³
Holds/Hatches	1 / 1
LOA/Beam	99.98 m / 17.00 m
Speed	abt. 13.5 knots
IMO fitted	Yes
Speed	13.5 knots
IMO fitted	Yes